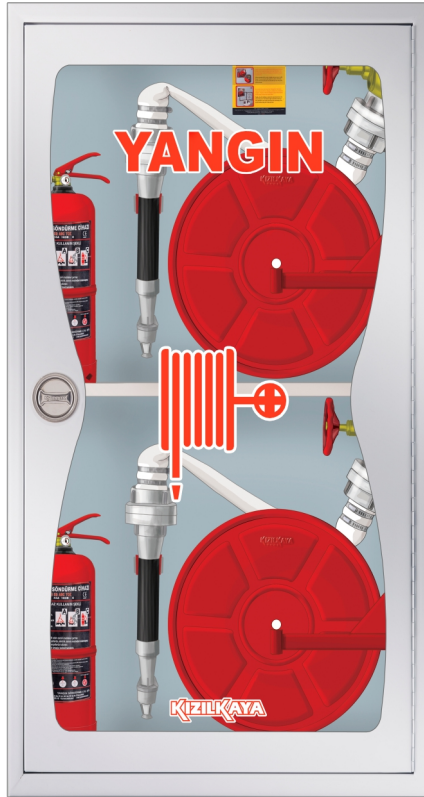


**FIRE CABINET**

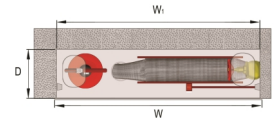
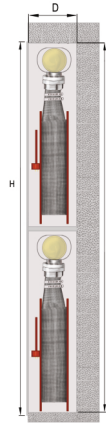
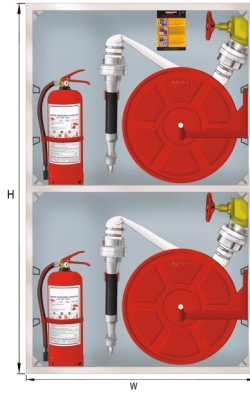
**LAY – FLAT HOSE**

SINGLE INSET GLASS DOOR, DOUBLE HOSE REEL, VERTICAL SECTION FOR 2 TUBES



► SE2-3114.1

- 2½" flat type fire hose, 2½" fire valve and 2½" fire lance are optional
- All parts are painted with electrostatic powder paint at 200°C, optionally in the colours RAL 9010 white, RAL 3003 red or RAL1013 champagne. Other colours are available to meet specific needs.
- This fire cabinet models are in compliance with EN 671-1.
- Fire cabinets and their doors can be optionally produced from stainless steel and with decorative cutouts to suit various architectural requirements.
- All models can be manufactured with front and rear doors.



CODE	MOUNTING STYLE	MODULAR DOOR TYPE	HOSE DIAMETER & LENGTH	TUBE CAPACITY	LIGHTING	W mm	H mm	D mm	W <sub>1</sub> mm	H <sub>1</sub> mm
SE2-3114.1	Recessed	Inset Glass Door	2" - 20 m	2 Tube / 6 kg	Optional	800	1400	200	760	1360
SE2-3114.3	Recessed	Inset Glass Door	2" - 30 m	2 Tube / 6 kg	Optional	800	1400	200	760	1360
SE2-3124.1	Surface	Inset Glass Door	2" - 20 m	2 Tube / 6 kg	Optional	800	1400	200	800	1400
SE2-3124.3	Surface	Inset Glass Door	2" - 30 m	2 Tube / 6 kg	Optional	800	1400	200	800	1400

► **CABINET HOUSING**

- Produced from 1.2 mm mild steel (DKP).
- Flaps at every corner for fire valve installation.
- Hose reel can be left or right mounted.
- Surface mount or recessed mount types obtainable.

► **HOSE REEL**

- Reel crank allows hose reel to be opened at an angle of 270°.
- 2" Fire valve and 2" hose sleeve
- 2" Fire lance and 2" hose sleeve
- 2" flat fire hose
- All connections are made with whipcheck safety cables instead of clamps.

► **CABINET DOOR**

- Inset glass door with radial frame, chrome plated handle.
- 4 mm thick tempered smoke glass
- Screen printed warning signs are fired at 700°C
- After the housing has been mounted on the wall, the doors can be simply attached to the housing with 4 screws.
- 180 degree opening door with continuous hinges, optionally stainless hinges or invisible hinges obtainable.