

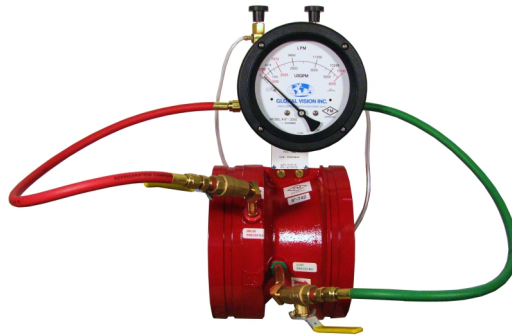
CHECK VALVE



MODEL	CONNECTION TYPE	OPERATING PRESSURE	OPERATING TEMPERATURE	DIMENSIONS	APPLICATION AREA
ÇEK VALF	Threaded Wafer Flanged Grooved	175psi-300psi	120°C	1" – 2" Threaded Connection Swing Type Check Valve 2"-12" Flanged Connection Swing Type Check Valve 2 ½" – 12" Wafer Double Clap Check Valve 2 ½" – 12" Grooved Connection Check Valve with Double Clap	Fire Pump Line – Fire Hydrant – Vertica Fire Pump Systems (Alarm valve) – Building Entries High- rise buildings

- Check valves are designed to pass flow in one direction with minimum resistance and to prevent damage of the equipments caused by reverse or back flow .Its a must for fire pump lines. Ideal for indoor and outdoor use.

FLOW METER



MODEL	CONNECTION TYPE	OPERATING PRESSURE	OPERATING TEMPERATURE	DIMENSIONS	APPLICATION AREA
FLOW METER	Kaynak Boyunlu Grooved	500psi	between 0°C – 49°C with water	2 ½" – 12"	All fire fight systems where fire pump is used

- Flow meter is used to ensure that the fire pump pressure is equal to the tag value.
- ULLIST-FM certified.